



Renolux

SCREEN



«IMPORTANT – READ CAREFULLY
AND KEEP FOR FUTURE
REFERENCE»

WARNING

- Never leave the child unattended
- Ensure that all the locking devices are engaged before use
- To avoid injury ensure that the child is kept away when unfolding and folding this product
- Do not let the child play with this product
- Always use the restraint system
- This product is not suitable for running or skating.

RECOMMENDATIONS FOR USE :

- Meets the requirements of the standard EN 1888-2:2018+A1:2022
- Read the instructions carefully before use.
- This vehicle is suitable for children up to 22kg or 4 years old, whichever comes first
- This vehicle is designed to be used only with one child.
- Accessories which are not approved by the manufacturer shall not be used.
- Always check the condition of the straps.
- Any load attached to the handle and/or on the back of the backrest and/or on the sides of the vehicle will affect the stability of the vehicle.
- Do not load the basket (under the seat) with more than 2kg.
- Do not load the pocket (on the canopy) with more than 400g.
- The parking device shall be engaged when placing and removing the children.
- It is recommended to use the most reclined position for new born babies.
- Only replacement parts supplied or recommended by the manufacturer shall be used.

CARE

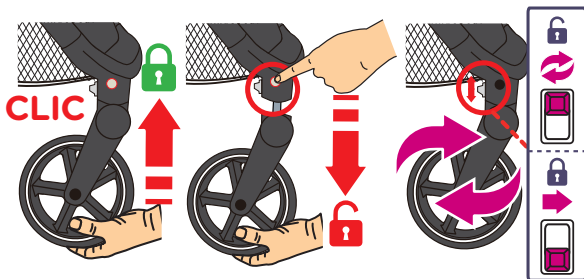
- Wash fabric parts by hand with a sponge and soapy water.
- Regularly check the condition of the wheels and grease the axles if necessary.

OPENING THE STROLLER

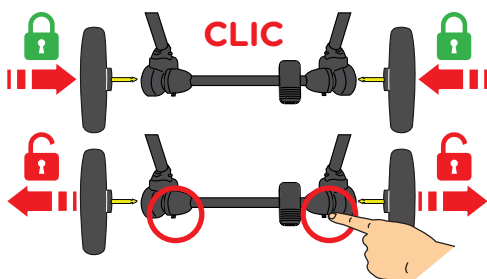
- 1 Grasp the handle: slide the latch (A) and press the button (B).
- 2 Lift the handle firmly upwards until you hear a click, indicating that the position is locked.



FRONT WHEELS

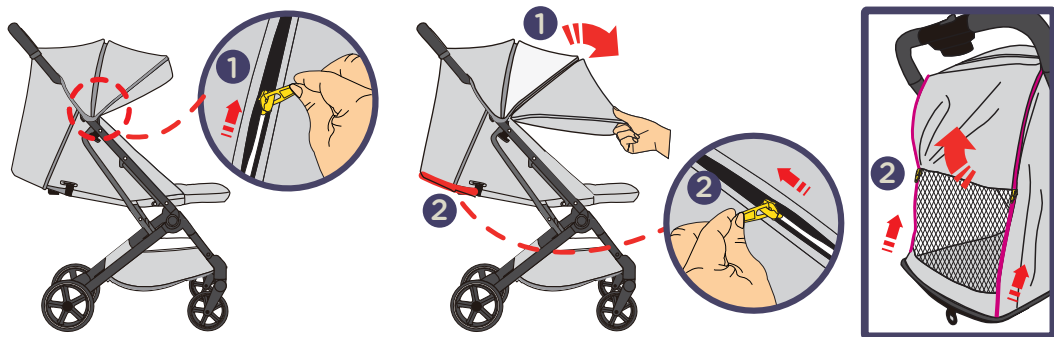


REAR WHEELS



CANOPY

- 1 The canopy has an extension that extends by opening the zipper.
- 2 The backrest has a mesh window for ventilation.



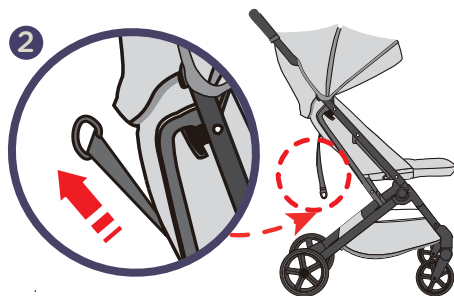
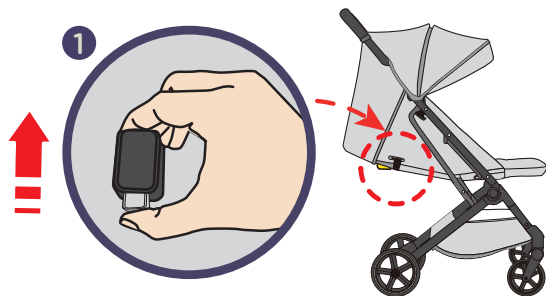
REAR WHEEL LOCK

- 1 To lock the rear wheels and keep the stroller in a fixed position, push down the brake on the transversal tube of the rear wheel unit.
- 2 To release the wheels and roll the stroller, lift the brake.



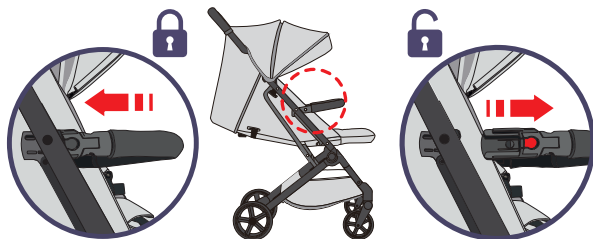
BACKREST INCLINATION

- 1 For a reclined position, press the plastic button at the back of the backrest. It is recommended for newborns to use the most reclined position.
- 2 For upright position, pull the strap up at the back of the backrest.



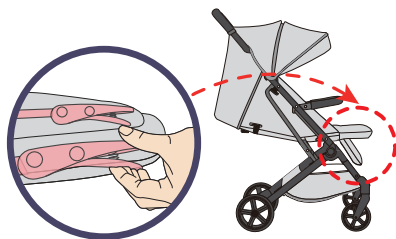
HANDRAIL

- 1 To install the handrail, insert the ends of the handrail into the holes in the adapter.
- 2 To remove it, press the buttons on each side of the handrail.



LEG REST INCLINATION

Press the lever located under the leg rest to change its tilt.



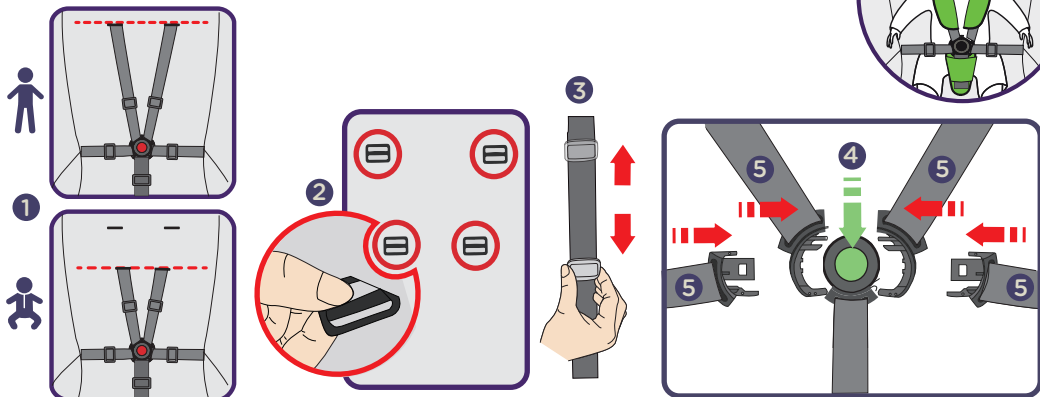
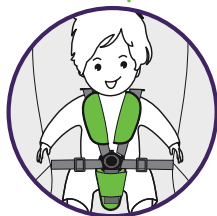
HARNESS ADJUSTMENT

This stroller offers two harness height positions on the backrest, allowing to follow the child's growth.

- 1 Choose the harness height best suited to your child's shoulder height.
 - 2 To move from one height to the other, remove the black plastic buckles through the backrest and insert them at the desired height.
 - 3 To adjust the harness, slide the double plastic loop to tighten or loosen the straps, ensuring your child is securely restrained.
 - 4 To open the harness: press the central button on the harness.
 - 5 To close the harness: clip the four side straps to the central button.
- It is important to always close and adjust the harness.

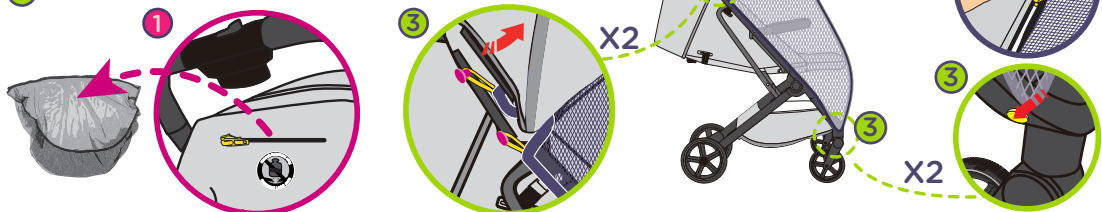


Always use the harness protectors and buckle protector.



INSTALLING THE MOSQUITO NET

- 1 Remove the mosquito net from the canopy pocket (maximum pocket load 400g).
- 2 Secure the mosquito net with the zip inside the canopy.
- 3 Hang the mosquito net on the frame.



CLOSING THE STROLLER

- 1 Recline the backrest.
- 2 Grasp the handle: slide the latch (A) and press the button (B).
- 3 Begin folding by tilting the handlebar downwards towards the ground.
- 4 Complete folding by lowering the handle to reach the final position.



COVER REMOVAL

To remove the cover, undo the 3 buttons and the metal ring on each side of the stroller as well as the three straps under the seat, and the zip near the handle.



- 1 cross strap with a metal ring
- 2 longitudinal straps with Velcro

RAIN COVER

Unfold the rain cover, position it on the stroller and secure it using the Velcro.



GARANTIE

RENOLUX FRANCE INDUSTRIE guarantees this product for 2 years from the date of purchase. Any use not in accordance with the explanatory notes and resulting in deterioration of the item shall not engage the responsibilities of Renolux. For any claim, return this warranty certificate to the store accompanied by your receipt.

