



«IMPORTANT! READ CAREFULLY AND KEEP FOR FUTURE REFERENCE»

WARNING

- Do not use the product unless all components are correctly fitted and adjusted.
 - Be aware of the risk of open fires and other sources of strong heat in the vicinity of the product.
 - Be aware of the risk of tilting when your child can push its feet against a table or any other structure.
 - Do not place this product near a window as it can be used as a step by the child and cause the child to fall out of the window.
 - Do not place this product near a window where cords from blinds or curtains could strangle a child.
 - Falling hazard: Prevent your child from climbing on the product
- For highchair use :
Never leave the child unattended.
Always use the restraint system.

RECOMMENDATIONS FOR USE :

Complies with the European standards EN14988:2017+A2:2024 and EN17191:2021

Do not use the product until the child can sit up unaided

Keep plastic covering away from children to avoid suffocation. It should be destroyed or stored out of reach of babies and children.

Before use, check that the locking mechanisms are engaged and correctly adjusted

For highchair use, this product is intended for children able to sit up unaided and up to 3 years or a maximum weight of 15 kg

Use this highchair only on flat, even and horizontal surfaces, and make sure that it is not near any electrical sockets, extensions or sources of heat (hob, stove, electrical or gas heater, etc.)

Do not use the product if any part is broken, torn or missing

Keep children away when unfolding and folding the product to avoid injury. Store the product away from children when it is folded in self standing position, to avoid the risk of the product falling.

Use only the spare parts approved by the manufacturer

All assembly fittings should always be tightened properly

Regularly inspect and maintain this chair. If necessary, re-tighten the screws regularly.

For Highchair use, this highchair can be used with a tray from 6 months and without a tray from 12 months, but always with the baby set.

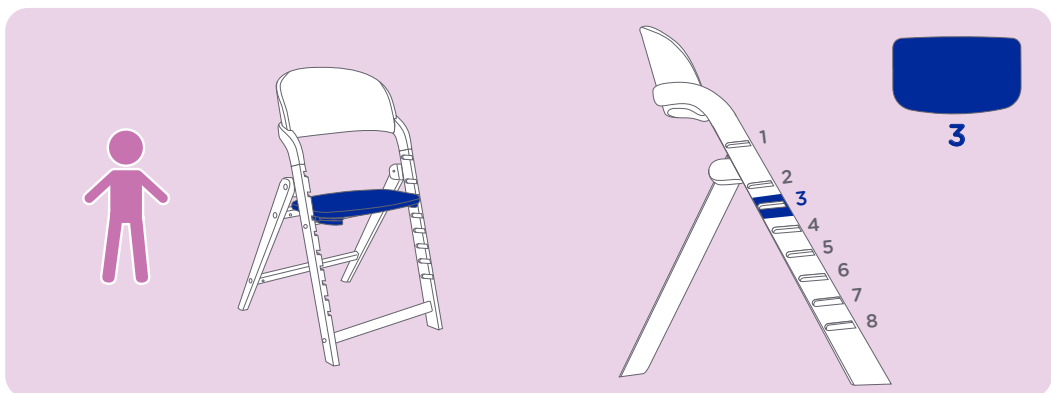
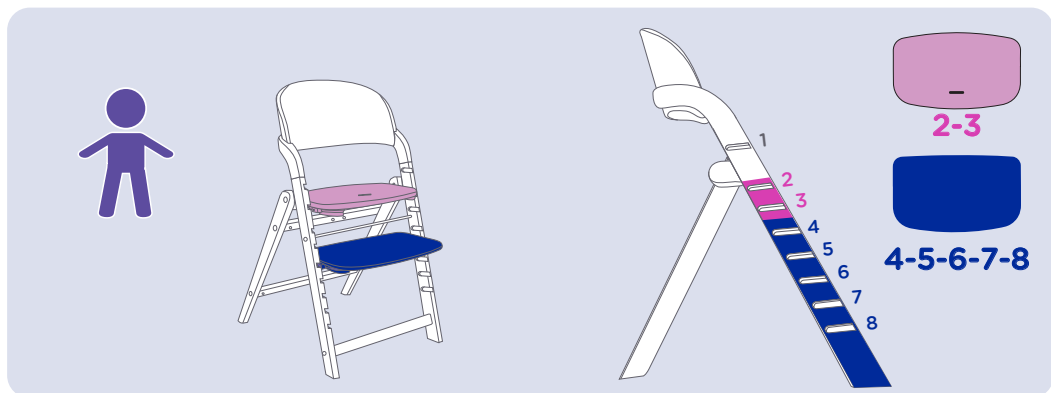
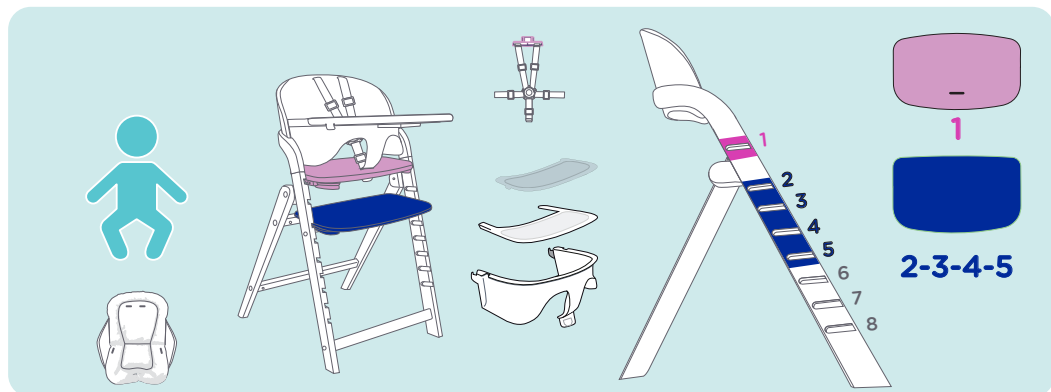
The restraint system (harness) shall be removed when the product is used as a seating.

WASHING INSTRUCTIONS

THE COVER IS FULLY REMOVABLE AND MUST BE WASHED BY HAND with a sponge and soapy water or in delicate machine program $\leq 30^{\circ}\text{C}$. Do not use chemical cleaning products. Allow it to dry naturally.

Precautions and recommendations for use of the tray: Unclip the two tabs on the sides to remove the plastic set.

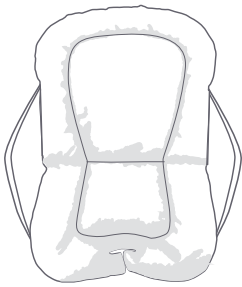
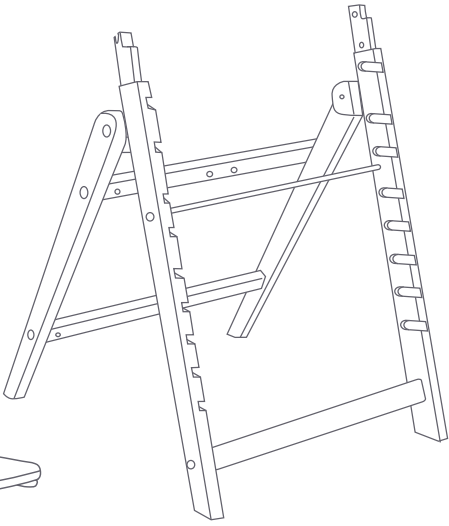
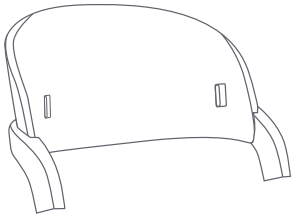
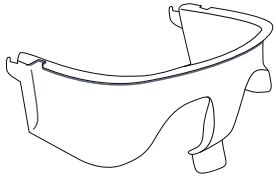
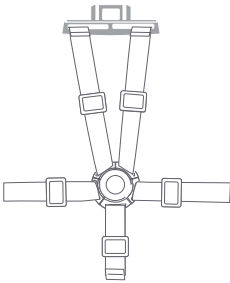
- Clean the product with a damp cloth and a mild detergent, wipe with a dry cloth.
- Do not use abrasive products to clean the high chair.
- Never store in a humid environment.



COMPONENTS

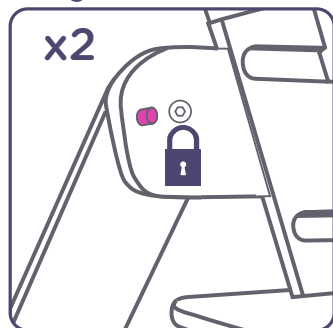


X 2

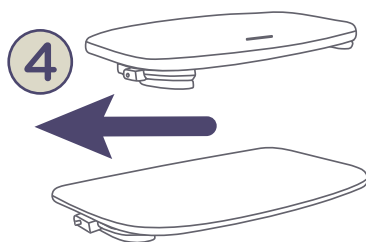
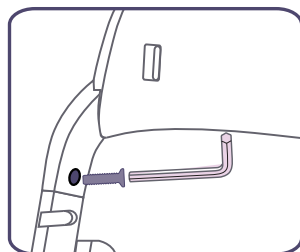
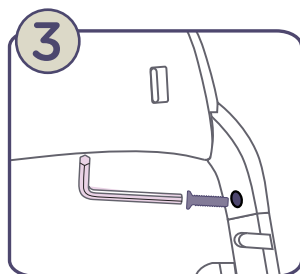
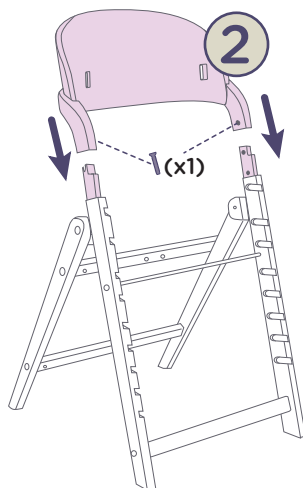


ASSEMBLING THE HIGH CHAIR

- 1 Open the feet as far as possible. The click of the lock shows that the foot is correctly opened.
- 2 Assembly the backrest on the feet.
- 3 Fix the backrest with the 2 screws on the feet.
- 4 Position the seat board and the footrest board according to age.

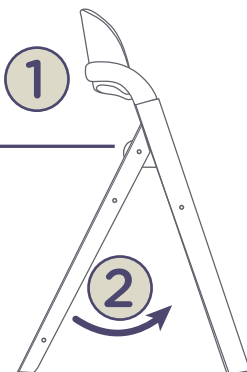
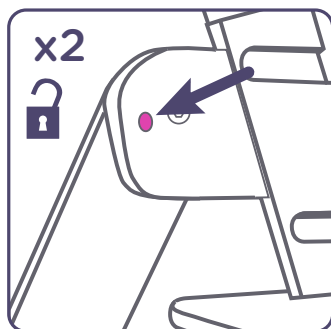


CLIC



FOLDING THE HIGH CHAIR

- 1 Press simultaneously on the right and left metal pins to release the lock.
- 2 Fold



SEAT / FOOTREST

6 - 36 M
≤ 15kg











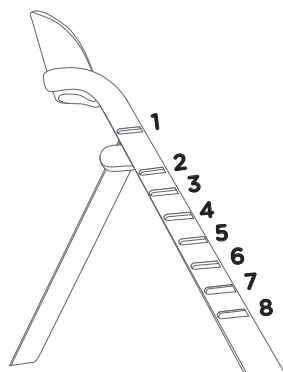
36 M +



14 years +
≤ 130kg



	Assise	Repose pieds
6 - 36 Mois ≤ 15kg 	1 	2-3-4-5 
36 Mois + 	2-3 	4-5-6-7-8 
14 ans + ≤ 130kg 	3 	/

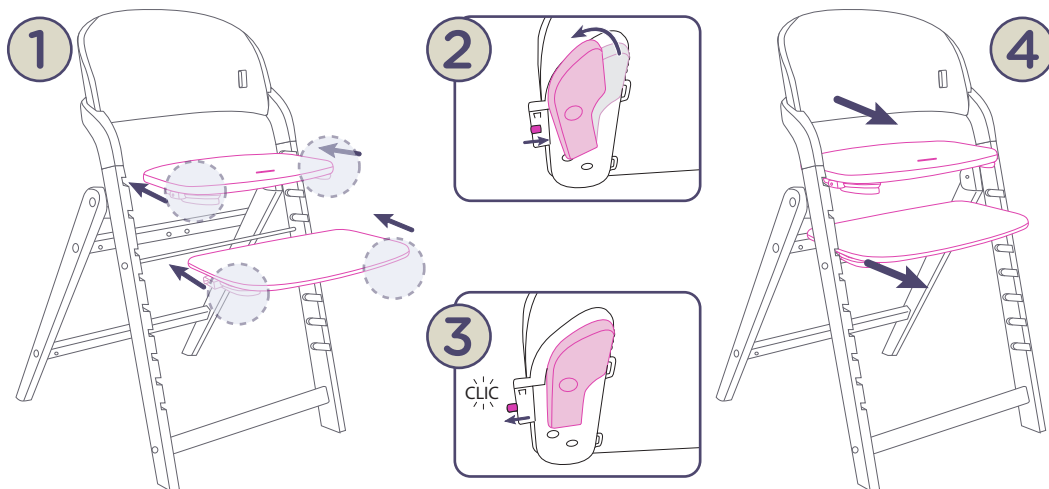


ASSEMBLY

- 1 Insert the seat board and, if applicable, the footrest board into the 2 slots provided for this purpose.

Simultaneously rotate the right and left handles to retract the right and left locking metal pins and complete the insertion.

- 3 When the seat board and, if applicable, the footrest board are correctly positioned, release the handles to allow the metal pins to come out and lock the installation.



DISASSEMBLY

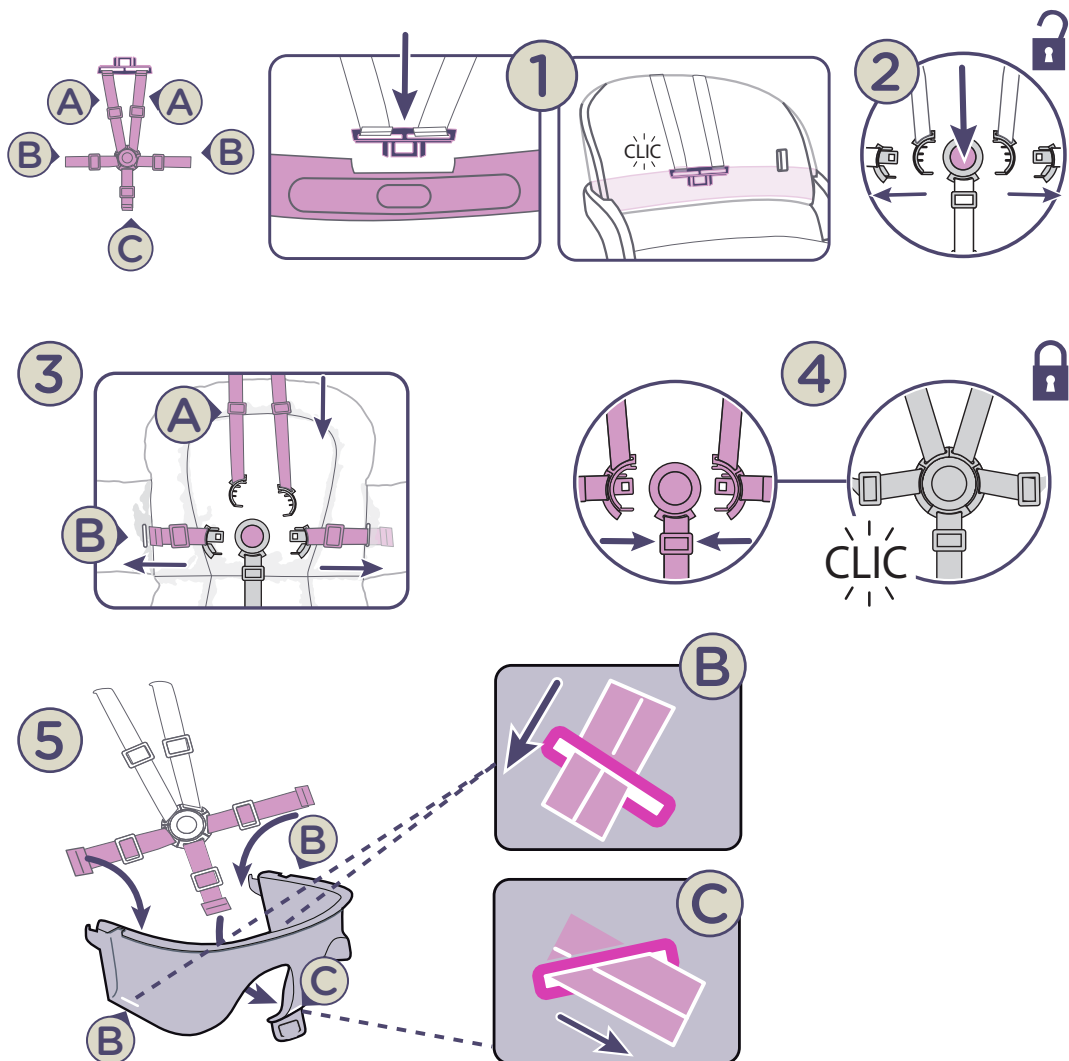
- 2 Rotate both handles simultaneously to unlock the system.
- 4 Remove the seat board and, if necessary, the footrest board.

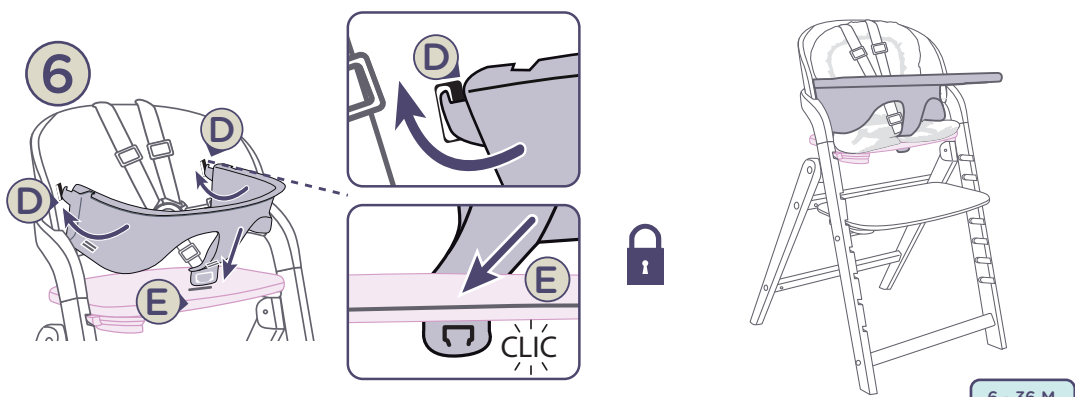
ASSEMBLING THE HARNESS / COVER

6 - 36 M



- 1 Clip the plastic part of the harness to the back of the backrest.
- 2 Open the buckle.
- 3 Pass the harness strands (A) over the back-to-front cushion, insert the ventral strands (B) (C) from the inside out through the cushion.
- 4 Lock the buckle, then place the cushion on the chair.
- 5 Insert the harness straps (B) (C) through the baby-set from the inside to the outside. Insert the right and left hooks (D) of the baby-set through the backrest then clip the
- 6 plastic crotch (E).





HARNESS

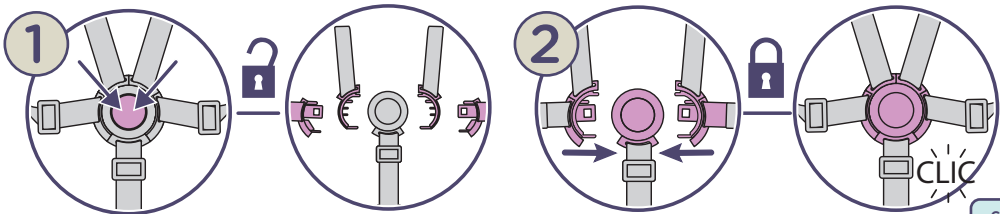
6 - 36 M



- 1 Opening the harness: press the central button of the buckle.
- 2 Closing the harness: clip the two side straps to the central part of the buckle.

To adjust the harness, slide the double plastic loop to tighten or loosen the straps and ensure that the child is properly restrained.

It is necessary to always close and adjust the harness, and to regularly check the condition of the straps.



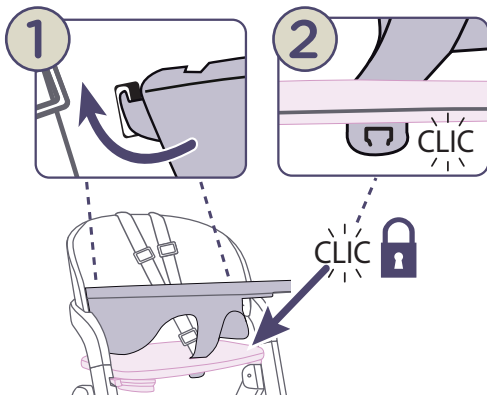
BABY-SET

6 - 36 M



ASSEMBLY

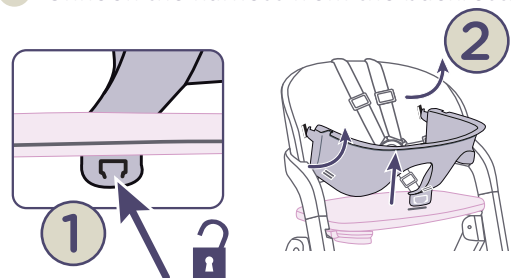
- 1 Insert the two right and left hooks of the baby-set through the backrest.
- 2 Clip the plastic crotch.



DISASSEMBLY

ALWAYS REMOVE THE TRAY BEFORE DISASSEMBLING THE BABY-SET

- 1 Press firmly on the plastic crotch clip.
- 2 Lift the assembly the baby-set until it is completely disengaged.
- 3 Unhook the harness from the backrest.



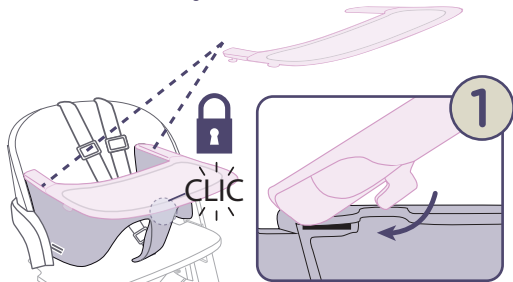
TRAY

6 - 36 M



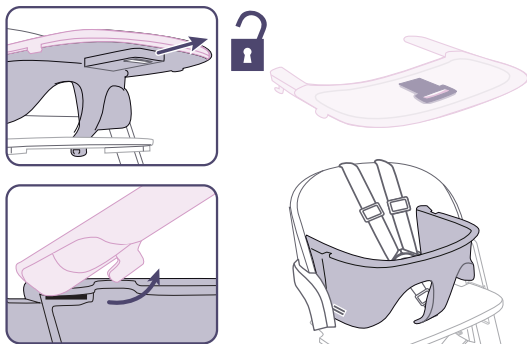
ASSEMBLY

- 1 Insert the hooks through the baby-set.
- 2 Lower and clip the tray onto the baby-set.



DISASSEMBLY

- 1 Pull the handle under the tray.
- 2 Lift the tray.



TRAY STORAGE



GARANTIE

RENOLUX FRANCE INDUSTRIE guarantees this product for 2 years from the date of purchase. Any use not in accordance with the explanatory notes and resulting in deterioration of the item shall not engage the responsibilities of Renolux. For any claim, return this warranty certificate to the store accompanied by your receipt.